

EN Hollowware

DE Hollowware

ES Hollowware

Page 746 to 753





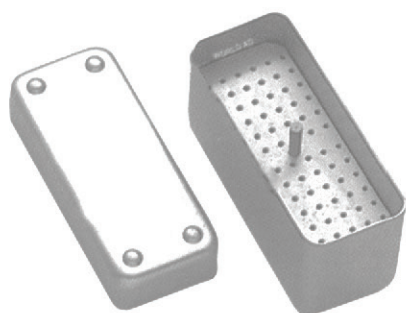
Needle Case Round with Cover
 OI 34-8901-01 65x15mm



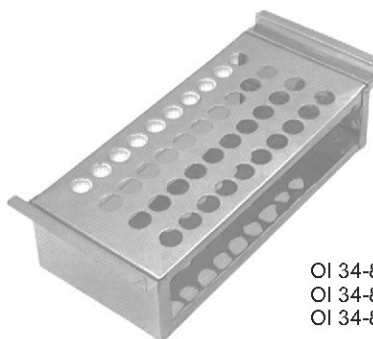
Needle Case Round
 OI 34-8902-01 80x20mm



Needle Case Rectangle
 OI 34-8903-01 70x70x10mm



Endodontic Box
 OI 34-8904-01
 100x40x50mm



Tube Rack

OI 34-8905-01 6.35x15.25x5cm for 12 tubes
 OI 34-8905-02 6.35x17.75x7.5cm for 27 tubes
 OI 34-8905-03 7.50x17.75x6.35cm for 36 tubes



Sprit Lamp
 OI 34-8906-01
 Standard Size



Sprit Lamp
 OI 34-8907-01
 Standard Size



Sputum Cup
 OI 34-8908-01 75x80mm
 OI 34-8908-02 100x50mm
 OI 34-8908-03 100x80mm



Dressing Jar

- | | | |
|---------------|-----------|---------------|
| OI 34-8909-01 | 80x60mm | OI 34-8910-01 |
| OI 34-8909-02 | 80x80mm | OI 34-8910-02 |
| OI 34-8909-03 | 100x100mm | OI 34-8910-03 |
| OI 34-8909-04 | 120x120mm | OI 34-8910-04 |
| OI 34-8909-05 | 150x150mm | OI 34-8910-05 |
| OI 34-8909-06 | 180x180mm | OI 34-8910-06 |
| OI 34-8909-07 | 200x200mm | OI 34-8910-07 |



Dressing Jar



Funnel

- | | |
|---------------|---------|
| OI 34-8912-01 | 100mm Ø |
| OI 34-8912-02 | 120mm Ø |
| OI 34-8912-03 | 150mm Ø |
| OI 34-8912-04 | 200mm Ø |



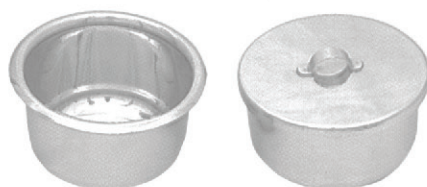
Cotton Holder
 OI 34-8911-01

Cotton Holder
 OI 34-8911-02



Forceps Jar

- | | |
|---------------|-----------|
| OI 34-8913-01 | 30x90mm |
| OI 34-8913-02 | 50x125mm |
| OI 34-8913-03 | 50x170mm |
| OI 34-8913-04 | 50x200mm |
| OI 34-8913-05 | 40x230mm |
| OI 34-8913-06 | 70x110mm |
| OI 34-8913-07 | 80x150mm |
| OI 34-8913-08 | 100x200mm |
| OI 34-8913-09 | 150x30mm |



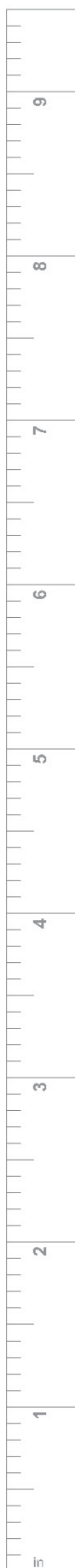
Gallipot

- | | | | |
|---------------|-------|---------------|-------|
| OI 34-8914-01 | 01 oz | OI 34-8914-09 | 09 oz |
| OI 34-8914-02 | 02 oz | OI 34-8914-10 | 10 oz |
| OI 34-8914-03 | 03 oz | OI 34-8914-11 | 11 oz |
| OI 34-8914-04 | 04 oz | OI 34-8914-12 | 12 oz |
| OI 34-8914-05 | 05 oz | OI 34-8914-13 | 13 oz |
| OI 34-8914-06 | 06 oz | OI 34-8914-14 | 14 oz |
| OI 34-8914-07 | 07 oz | OI 34-8914-15 | 15 oz |
| OI 34-8914-08 | 08 oz | OI 34-8914-16 | 16 oz |



Sponge Bowl

- | | |
|---------------|-------|
| OI 34-8915-01 | 12 cm |
| OI 34-8915-02 | 15 cm |
| OI 34-8915-03 | 20 cm |



**Medicine Cup**

OI 34-8916-01 50ml
 OI 34-8916-02 60ml
 OI 34-8916-03 70ml

**Lotion Bowl without spout**

OI 34-8917-01 40x19mm	OI 34-8917-08 150x65mm
OI 34-8917-02 50x25mm	OI 34-8917-09 180x85mm
OI 34-8917-03 60x30mm	OI 34-8917-10 200x100mm
OI 34-8917-04 80x40mm	OI 34-8917-11 250x120mm
OI 34-8917-05 100x50mm	OI 34-8917-12 300mm
OI 34-8917-06 120x60mm	OI 34-8917-13 350mm
OI 34-8917-07 140x60mm	OI 34-8917-14 400mm

**Wash Basin**

OI 34-8918-01 300x80mm
 OI 34-8918-02 320x85mm
 OI 34-8918-03 330x90mm
 OI 34-8918-04 350x110mm
 OI 34-8918-05 400x115mm

**Kick Bucket with Trolley**

OI 34-8919-01
 390x280x180mm

**Kidney Tray Shallow**

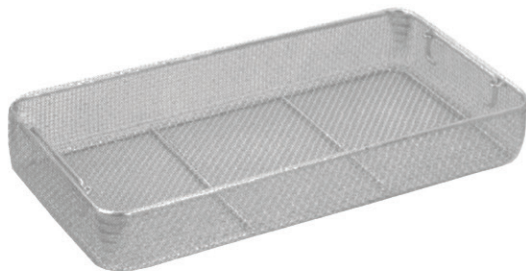
OI 34-8920-01 17cm
 OI 34-8920-02 22cm
 OI 34-8920-03 24cm

**Kidney Tray**

OI 34-8921-01 12cm
 OI 34-8921-02 15cm
 OI 34-8921-03 18cm
 OI 34-8921-04 20cm
 OI 34-8921-05 25cm
 OI 34-8921-06 28cm
 OI 34-8921-07 30cm

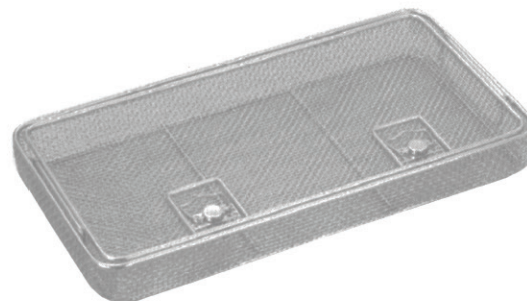
**Kidney Tray (with cover)**

OI 34-8922-01 15cm
 OI 34-8922-02 20cm
 OI 34-8922-03 25cm
 OI 34-8922-04 30cm



Wire Mesh Tray

- OI 34-8923-01 240x250x5mm
- OI 34-8923-02 480x250x5mm
- OI 34-8923-03 550x250x5mm
- OI 34-8923-04 240x250x7mm
- OI 34-8923-05 480x250x7mm
- OI 34-8923-06 240x250x10mm
- OI 34-8923-07 480x250x10mm



Wire Mesh Tray with Lid

- OI 34-8924-01 240x250x5mm
- OI 34-8924-02 480x250x5mm
- OI 34-8924-03 550x250x5mm
- OI 34-8924-04 240x250x7mm
- OI 34-8924-05 480x250x7mm
- OI 34-8924-06 240x250x10mm
- OI 34-8924-07 480x250x10mm



Perforated Tray

- OI 34-8925-01 200x100x40mm
- OI 34-8925-02 250x120x50mm
- OI 34-8925-03 300x150x50mm
- OI 34-8925-04 350x170x50mm
- OI 34-8925-05 400x200x50mm



Instruments Tray without Lid

- OI 34-8926-01 100x150x25mm
- OI 34-8926-02 150x200x40mm
- OI 34-8926-03 200x250x45mm
- OI 34-8926-04 250x300x50mm
- OI 34-8926-05 300x350x50mm
- OI 34-8926-06 150x300x50mm
- OI 34-8926-07 200x300x50mm
- OI 34-8926-08 230x150x50mm



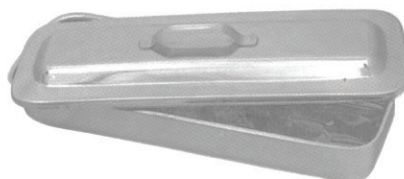
Instruments Tray with Lid

- OI 34-8927-01 100x150x25mm
- OI 34-8927-02 150x200x40mm
- OI 34-8927-03 200x250x45mm
- OI 34-8927-04 250x300x50mm
- OI 34-8927-05 300x350x50mm
- OI 34-8927-06 150x300x50mm
- OI 34-8927-07 200x300x50mm
- OI 34-8927-08 230x150x50mm

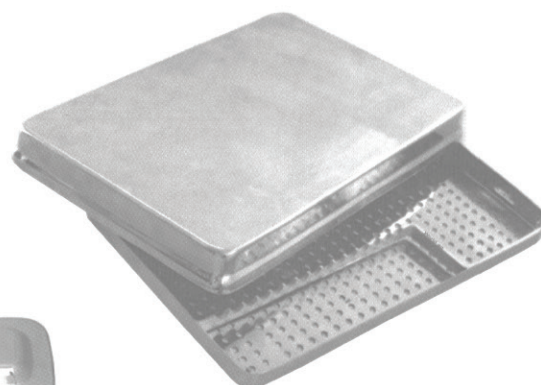




Burr Tray
 OI 34-8928-01
 190x100x20mm



Cathetes Tray with Lid
 OI 34-8929-01 300x80x40mm
 OI 34-8929-02 350x90x45mm
 OI 34-8929-03 400x100x50mm



Scaler Tray with cover
 OI 34-8930-01
 200x100x16mm



**Instruments Box
 with Hooks**

OI 34-8931-01 170x70x30mm
 OI 34-8931-02 180x80x40mm
 OI 34-8931-03 200x100x40mm
 OI 34-8931-04 230x120x50mm
 OI 34-8931-05 250x125x50mm
 OI 34-8931-06 300x150x50mm
 OI 34-8931-07 350x170x50mm
 OI 34-8931-08 400x200x90mm
 OI 34-8931-09 500x200x120mm



Instruments Box

OI 34-8932-01 170x70x30mm
 OI 34-8932-02 180x80x40mm
 OI 34-8932-03 200x100x40mm
 OI 34-8932-04 230x120x50mm
 OI 34-8932-05 250x125x50mm
 OI 34-8932-06 300x150x50mm
 OI 34-8932-07 350x170x50mm
 OI 34-8932-08 400x200x90mm
 OI 34-8932-09 500x200x120mm



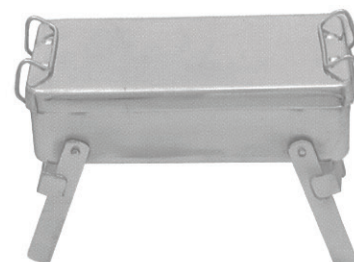
**Instruments Box
 Perforated**

- OI 34-8933-01 200x100x40mm
- OI 34-8933-02 250x150x40mm
- OI 34-8933-03 300x150x40mm



Electric Sterilizer

- OI 34-8934-01 200x100x120mm
- OI 34-8934-02 250x120x140mm
- OI 34-8934-03 300x150x150mm
- OI 34-8934-04 350x170x170mm
- OI 34-8934-05 400x200x180mm
- OI 34-8934-06 450x230x190mm



Non Electric Sterilizer

- OI 34-8935-01 200x100x65mm
- OI 34-8935-02 250x125x65mm
- OI 34-8935-03 300x150x100mm
- OI 34-8935-04 350x170x65mm
- OI 34-8935-05 400x200x100mm



Electric Sterilizer
 OI 34-8936-01
 280x125x65mm

- OI 34-8937-01 125x80mm
- OI 34-8937-02 125x120mm
- OI 34-8937-03 150x100mm
- OI 34-8937-04 150x150mm
- OI 34-8937-05 180x180mm
- OI 34-8937-06 190x140mm
- OI 34-8937-07 190x190mm
- OI 34-8937-08 200x200mm
- OI 34-8937-09 240x120mm
- OI 34-8937-10 240x240mm
- OI 34-8937-11 290x140mm
- OI 34-8937-12 290x240mm
- OI 34-8937-13 290x290mm
- OI 34-8937-14 340x160mm
- OI 34-8937-15 340x340mm
- OI 34-8937-16 390x150mm
- OI 34-8937-17 390x200mm
- OI 34-8937-18 390x290mm



Sterilizer Drum





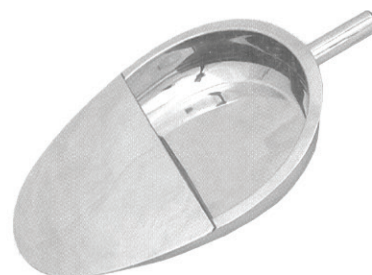
Bedpan Hand Made
OI 34-8938-01
Standard



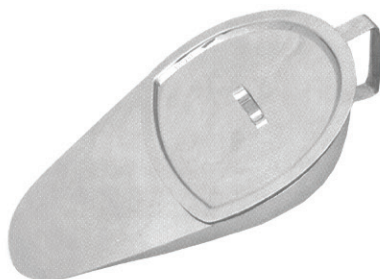
Bedpan Hand Made
OI 34-8939-01 Adult
OI 34-8939-02 Child



Bedpan Hand Made
OI 34-8940-01
Standard



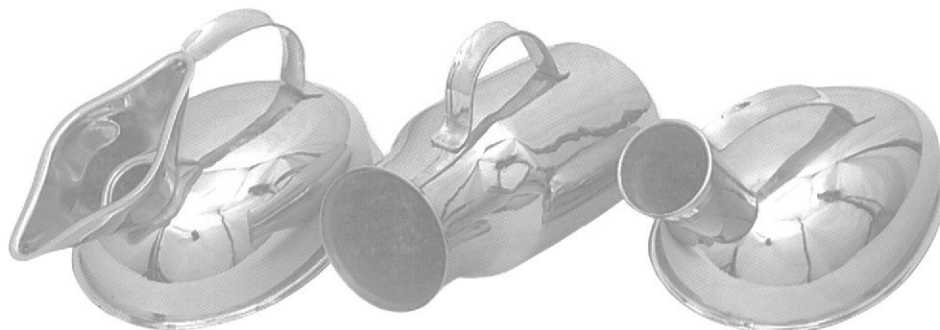
**Bedpan Simple
pressed body with handle**
OI 34-8942-01 Adult
OI 34-8942-02 Child



Bedpan Sleeper Type
OI 34-8943-01 Adult
OI 34-8943-02 Child



Bedpan Chamber Port
OI 34-8944-01
Standard



Urinal Female
 OI 34-8945-01
 Standard

Urinal Male Vertical
 OI 34-8946-01
 Standard

Urinal Male
 OI 34-8947-01
 Standard



**Bedpan perfection
 type seamless**
 OI 34-8948-01
 350x300mm



Bedpan perfection type
 OI 34-8949-01 370x290mm
 OI 34-8949-02 320x240mm



Measuring Jug
 OI 34-8950-01 0.5 Ltr
 OI 34-8950-02 1.0 Ltr
 OI 34-8950-03 1.5 Ltr
 OI 34-8950-04 2.0 Ltr



Pail/Bucket with Lid
 OI 34-8951-01 06 Ltr
 OI 34-8952-02 10 Ltr
 OI 34-8952-03 15 Ltr



Douch Can/Irrigator
 OI 34-8952-01 1.0 Ltr
 OI 34-8952-02 1.5 Ltr
 OI 34-8952-03 2.0 Ltr

